



PRODUCTS CATALOGUE

Showcase 2022



PRECISE SHEET METAL AND ELECTRONICS MANUFACTURER

WITH 20+ YEARS EXPERIENCE IN

CASH DRAWER PRODUCTION

MADE IN BULGARIA, EU
QUALITY CONTROL WITH GUARANTEE
DELIVERY 5 WORK DAYS WITHIN EU



EuroCIS

31 MAY–2 JUNE 2022

Düsseldorf · Germany

FACTORY ADDRESS:
141 TRETI MART BLVD.
MONTANA, BULGARIA

WWW.ZIMP.BG



Z410X

PREMIUM CASH DRAWER



01 PREMIUM CASH DRAWERS

- ✓ INOX body & panel
- ✓ Powder coated steel drawer
- ✓ Steel sliding mechanism with ball bearings
- ✓ Removable ABS insert and coin cups
- ✓ Stainless steel clamps for 4/5 notes
- ✓ Electronic interface to POS device

Z 410X

Mechanical

Electrical

Width: 410 mm
Length: 415 mm
Height: 110 mm

Weight (n): 6.60 kg
Weight (b): 7.60 kg



5B/8C

Z 410XP

Mechanical

Electrical

Width: 410 mm
Length: 415 mm
Height: 110 mm

Weight (n): 6.60 kg
Weight (b): 7.60 kg



5B/8C

02 CLASSIC CASH DRAWERS

- ✓ Powder coated body & panel
- ✓ Steel sliding mechanism with ball bearings
- ✓ Removable ABS insert and coin cups
- ✓ Stainless steel clamps for 4/5 notes
- ✓ Electronic interface to POS device



4B/8C

Z330

Mechanical

Electrical

Width: 330 mm

Length: 330 mm

Height: 100 mm

Weight (n): 4.70 kg

Weight (b): 5.00 kg

Z366

Mechanical

Electrical

Width: 366 mm

Length: 405 mm

Height: 100 mm

Weight (n): 6.34 kg

Weight (b): 6.80 kg



4B/8C



4B/8C

Z410

Mechanical

Electrical

Width: 410 mm

Length: 415 mm

Height: 110 mm

Weight (n): 6.60 kg

Weight (b): 7.20 kg

Z410-5

Mechanical

Electrical

Width: 410 mm

Length: 415 mm

Height: 110 mm

Weight (n): 6.60 kg

Weight (b): 7.20 kg



5B/8C

- ✓ Powder coated body & panel
- ✓ Lightweight plastic drawer
- ✓ Steel sliding mechanism with ball bearings
- ✓ Electronic interface to POS device

BUDGET CASH DRAWERS 03



4B/8C

Z 250

Mechanical

Electrical

Width: 250 mm

Length: 320 mm

Height: 105 mm

Weight (n): 3.10 kg

Weight (b): 3.30 kg

A 330

Mechanical

Electrical

Width: 330 mm

Length: 405 mm

Height: 100 mm

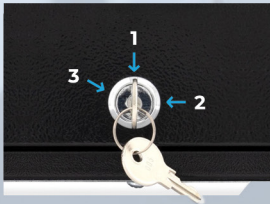
Weight (n): 4.25 kg

Weight (b): 4.60 kg



4B/5C

STANDARD FEATURES



HIGH QUALITY 3 POSITION KEY LOCK



INJECTION MOULDED INSERT TRAY WITH REMOVABLE COIN CUPS

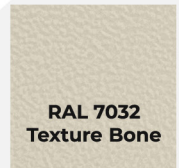
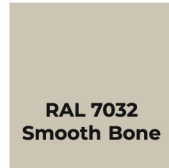
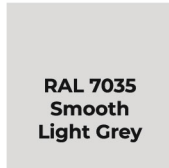


STEEL SLIDING MECHANISM WITH POLYURETHANE ROLLERS ON BALL BEARINGS

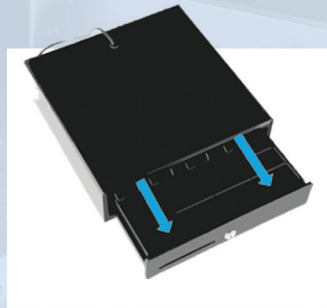
04 OPTIONS FOR CASH DRAWERS

- ✓ Powder coating in any RAL colour
- ✓ Interface for every available POS device
- ✓ Custom specification Voltage & Current
- ✓ Extras for Mechanical and Electrical Cash Drawers

COLOURS



EXTRAS



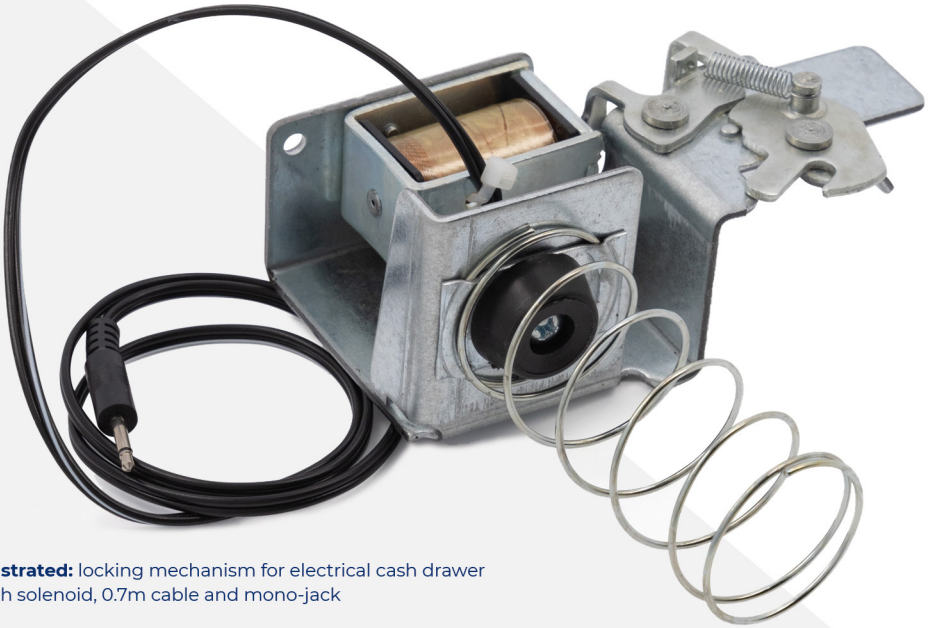
MAGIC OPENING
Pressing the front panel inwards activates the mechanism and opens the drawer.



PUSH BUTTON

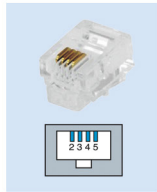
Pressing the button activates the mechanism that opens the drawer.

ORIGINAL LOCKING MECHANISM FOR CASH DRAWERS

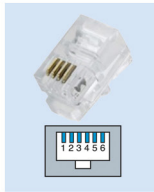


illustrated: locking mechanism for electrical cash drawer with solenoid, 0.7m cable and mono-jack

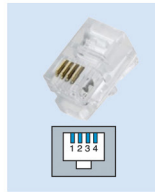
INTERFACE PLUG TYPE



RJ11-6P4C



RJ12-6P6C



RJ9-4P4C



Mono-jack

SOLENOID VOLTAGE

6V - 5Ω

24V - 20Ω

12V - 10Ω

ZIMP
CASH DRAWER

CUSTOM ON REQUEST